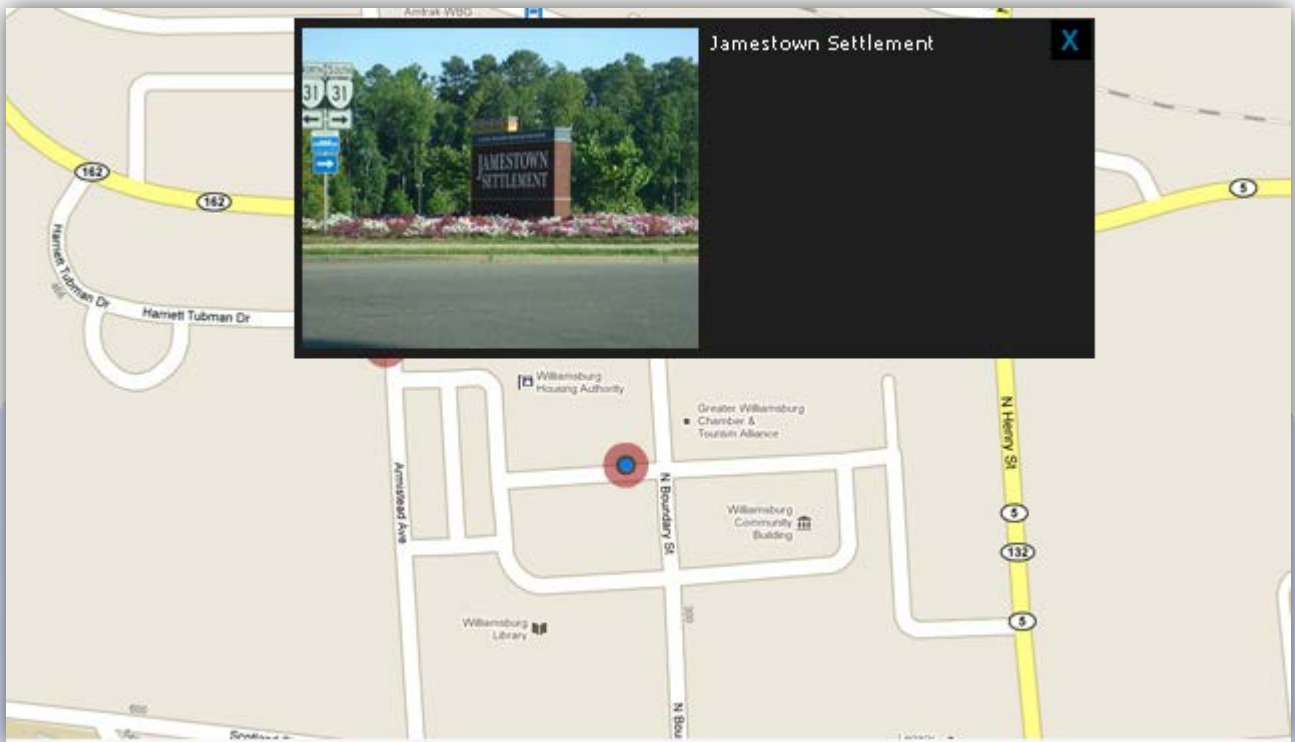




# MAGIC Map Detail



A very nice and useful module that allows you to pinpoint special interest points on a predefined map, you can add descriptions, photos or video to each location.

## Features:

- Supports images (JPG, PNG, GIF);
- Support Movie (FLV);
- Support special characters (â&#x2013;æçèèëëïïòœúüÛÛÙÇÔÏËËËËÇÆÁÀ);
- Content point text colors;
- Ability to move points anywhere on the map (axis x/y);
- Enable/Disable - Every Point;
- Super easy to use.

**NEW FEATURE<sup>1</sup>:** Now you can locate the points of interest with maximum accuracy (see DEMO 3)!

**NEW FEATURE<sup>2</sup>:** You have two colors for points (see DEMO 1 & Demo 2)!

**NEW FEATURE<sup>3</sup>:** From now you have possibility to load multiple instances of the same module on the same website!!!

This module contains 10 (ten) predefined points, to add more (maximum 14) points please contact support.

**Troubleshooting:** For any assistance, please do not hesitate to contact our support team.

## Compatibility with Joomla:



## Magic Map Detail (version:3.0.2)



# MAGIC Map Detail

Module Class Suffix

SWFObject script  Mode 1 (Local)  Mode 2 (Google)

Debug Mode

Multiple Instances

### Global Settings

Width

Height

Point Color/Location

Map Image Path

### Point 1 Settings

Photo or Movie

Point X

Point Y

Photo/Movie Path

Font Color

Text Size

Text

Link

Text Link

Link Color

- **Module Class Suffix** - A suffix to be applied to the css class of the module (table.moduletable), this allows individual module styling;
- **SWFObject script** - Mode 1 will use a local copy. Mode 2 will use the file hosted by Google. Safe mode will switch to a safe embedding code;
- **Debug Mode** - No (Recommended);
- **Multiple Instances** - This parameter allow to load multiple instances of the same module on the same website.  
**How it Works:** Make a copy of this module. After that, in the new copy set this parameter to "**Copy 1**"! Same, for other instances, but set this parameter to "Copy 2, Copy 3 ....".

### GLOBAL SETTINGS:

- **Width** - Set the global stage width;
- **Height** - Set the global stage height;
- **Point Color/Location - Point Locations:** Help you to locate as accurately on your map, points of interest. **Color Black/Red & Color Red/Blue:** With this parameters you can choose the color for map points;
- **Map Image Path** - The image path is used to specify the location of the image that should be loaded on the map;

### POINT SETTINGS:

- **Enable Point** - Choose if you want to enable or disable a specific point;
- **Photo or Movie** - Choose what you want to add in the description box: a photo or a movie;
- **Point X** - Horizontal position of the point. Use **Point Locations** for locate the points of interest with maximum accuracy;
- **Point Y** - Vertical position of the point. Use **Point Locations** for locate the points of interest with maximum accuracy;
- **Photo/Movie Path** - Is used to specify the location of the image or movie that should be loaded on the map in description box;  
**How add movies?**  
For the Photo/Movie Path parameter push the **Select** button and in the pop-up window insert the default image path in the Image URL field and push the **Insert** button!
- **Font Color** - Font color for text, that appears in description box;

- **Text Size** - Insert the font size for your text description;
- **Text** - Insert a text, that will appear in description box.
- **Link** - Insert a link;
- **Text Link** - Insert a text for the link;
- **Link Color** - Choose a color for the text link.



## MAGIC Map Detail

*Please recommend us to your friends if you like our work! Please do not forget to Rate our Item. We would be very happy to see your comments and your Stars.*

***Thats it, if you are experiencing any difficulties, or you would like some assistance with implementation, feel free to get in touch by filling out the contact [support!](#)***

**Thanks, for buying!**